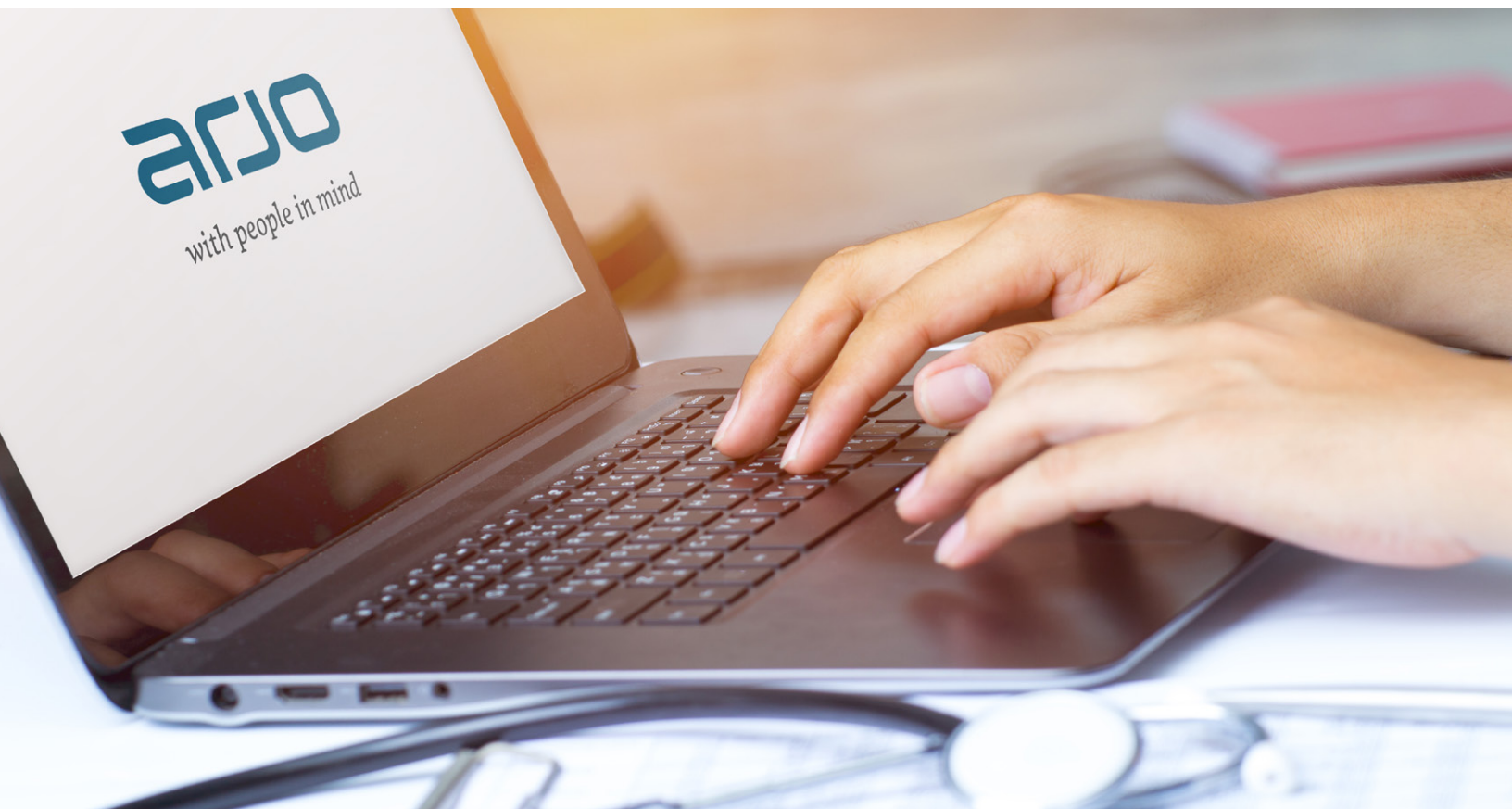


2019 WEBINAR SERIES

# Arjo Academy educational program offerings



Join us on the **first Wednesday** and **final Friday** of every month as we spotlight the hottest topics in critical care, early mobility, dementia care, safe patient handling, wound care and more!

Presented by key opinion leaders and Arjo's very own clinical team, this series has been designed by clinicians to keep you up-to-date on the newest trends and topics in health care.

## COMPLIMENTARY WEBINARS

To learn more, visit  
[info.arjo.us/academy](https://info.arjo.us/academy)

Provider approved by the  
California Board of Registered Nursing,  
Provider #CEP17028  
for **1.0 Contact Hours**

DATE	PROGRAM	WEBINAR OBJECTIVES	DESCRIPTION
March 29	Early Mobility in the ICU	<ul style="list-style-type: none"> <li>Discuss the impact of immobility</li> <li>Discuss evidence and benefits for early mobility in the ICU</li> <li>Review Early Mobility program and its alignment to safe patient handling</li> </ul>	Complications of immobility, nurse and patient injury risk and solutions to mobilizing your patient will be discussed.
April 3	The science behind microclimate	<ul style="list-style-type: none"> <li>Discuss the etiology of pressure injuries</li> <li>Discuss the effects of temperature, moisture and the importance of the microclimate</li> </ul>	The etiology of pressure injury, specifically how pressure, shear, heat and moisture affect the skin, as well as the differences between positive and negative airflow, will be discussed.
April 26	Why wait?	<ul style="list-style-type: none"> <li>Discuss the consequences of immobility</li> <li>Review the benefits of progressive mobility</li> <li>Review the benefits of in-bed mobility, such as prone positioning</li> </ul>	Barriers, complications and solutions to supporting an Early Mobility program will be discussed.
May 1	Are you active or reactive?	<ul style="list-style-type: none"> <li>Define active and reactive surfaces</li> <li>Differentiate the characteristics of support surfaces</li> <li>List recommended guidelines for support surface selection</li> </ul>	The high cost of pressure injuries and how support surfaces are part of the prevention equation according to the NPUAP Support Surface Standards Initiative (S3I), will be discussed.
May 31	Nursing considerations for prone therapy	<ul style="list-style-type: none"> <li>Review skin considerations</li> <li>Understand invasive line management</li> <li>Understand important testing/intervention management and procedures</li> </ul>	The challenges of and solutions for caring for a patient in the prone position will be discussed.
June 5	Safe Patient Handling and pressure injury prevention	<ul style="list-style-type: none"> <li>Discuss the impact of shear and friction on skin</li> <li>Develop a care plan for pressure injuries and decreased mobility</li> <li>Define pressure, shear and friction</li> </ul>	The impact that friction and shear have on the skin, as well as safe patient handling devices to safely mobilize the patient, will be discussed.
June 28	Early Mobility in the ICU	<ul style="list-style-type: none"> <li>Discuss the impact of immobility</li> <li>Discuss evidence and benefits for early mobility in the ICU</li> <li>Review Early Mobility program and its alignment to safe patient handling</li> </ul>	Complications of immobility, nurse and patient injury risk and solutions to mobilizing your patient will be discussed.
July 3	The science behind microclimate	<ul style="list-style-type: none"> <li>Discuss the etiology of pressure injuries</li> <li>Discuss the effects of temperature, moisture and the importance of the microclimate</li> </ul>	The etiology of pressure injury, specifically how pressure, shear, heat and moisture affect the skin, as well as the differences between positive and negative airflow, will be discussed.
July 26	Why wait?	<ul style="list-style-type: none"> <li>Discuss the consequences of immobility</li> <li>Review the benefits of progressive mobility</li> <li>Review the benefits of in-bed mobility, such as prone positioning</li> </ul>	Barriers, complications and solutions to supporting an early mobility program will be discussed.
Aug. 30	Early Mobility in the ICU	<ul style="list-style-type: none"> <li>Discuss the impact of immobility</li> <li>Discuss evidence and benefits for early mobility in the ICU</li> <li>Review Early Mobility program and its alignment to safe patient handling</li> </ul>	Complications of immobility, nurse and patient injury risk and solutions to mobilizing your patient will be discussed.
Sept. 4	Safe Patient Handling and pressure injury prevention	<ul style="list-style-type: none"> <li>Discuss the impact of shear and friction on skin</li> <li>Develop a care plan for pressure injuries and decreased mobility</li> <li>Define pressure, shear and friction</li> </ul>	The impact that friction and shear have on the skin, as well as safe patient handling devices to safely mobilize the patient, will be discussed.
Sept. 27	Prone positioning: positioning the patient for improved outcomes	<ul style="list-style-type: none"> <li>Discuss the impact of immobility in the ICU</li> <li>Describe the pathophysiology of ARDS</li> <li>Discuss the different treatment modalities for ARDS</li> </ul>	The pathophysiology of ARDS, treatment modalities, research findings and how best to safely implement prone therapy will be discussed.
Oct. 2	Care of the bariatric patient	<ul style="list-style-type: none"> <li>Discuss the physiological effects of obesity</li> <li>Describe proper assessments for the bariatric patient</li> <li>Identify challenges for patients, HCPs and the facility</li> </ul>	Assessment criteria for the bariatric patient, facility readiness, proper equipment selection and use, as well as staff education, will be discussed.
Oct. 25	Prone positioning: positioning the patient for improved outcomes	<ul style="list-style-type: none"> <li>Discuss the impact of immobility in the ICU</li> <li>Describe the pathophysiology of ARDS</li> <li>Discuss the different treatment modalities for ARDS</li> </ul>	The pathophysiology of ARDS, treatment modalities, research findings and how best to safely implement prone therapy will be discussed.

Register for our clinician-centered webinars at  
[info.arjo.us/academy](https://info.arjo.us/academy)